

COMPACT CHASSIS DYNAMOMETER

Model CCD-10

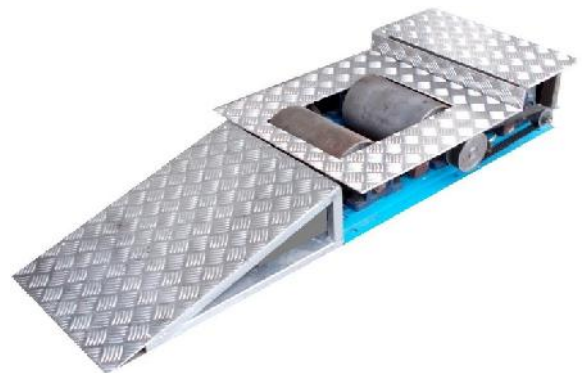


Available in 10Kw & 50Kw

This heavy duty engine dynamometer can extract 300kW of mechanical power from automotive engines, including cars and trucks. Its heavy-duty frame and universal engine coupling shaft are ideal for high torque applications. The air-cooled eddy current dynamometer requires no external cooling lines, and is easy to install and use, giving years of trouble free service. The sophisticated controller can operate the dynamometer from the front panel or from a computer via the remote mode. Control modes include Manual Load, Speed, Torque and Road Load control. The dynamometer can hold the vehicle under test at a given speed for tuning, or fuel consumption measurements, or mimic actual road load conditions. Drive cycle software is included allowing vehicles to be tested on any drive cycle required. Additional inputs are included for Data Acquisition, display and logging. With optional throttle servo motor the dynamometer can run fully automated test cycles.

FEATURES

- 10 kW Mechanical power ratings
- Suitable for motorcycle up to 200cc
- Up to 90 kph, 120Nm at wheel
- Precision Torque and Speed Measurement
- Simple "Air Heater" dump load
- Advanced Dynamometer Controller
- Includes Analog Input Channels for Logging
- Free computer software for Graphic Display
- 1 Year Warranty Included



Our systems are 100% Made in Malaysia
We have local technical support, straight from the factory

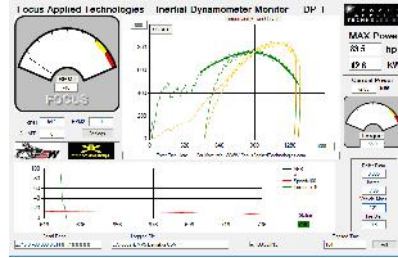


COMPACT CHASSIS DYNAMOMETER

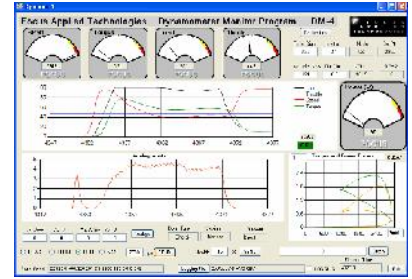
Model CCD-10



Rear-approach ramp



"Power Pull"



R&D Screen Shot

SPECIFICATIONS

PHYSICAL

Weight : 70kg (approx)
LxWxH : 900 x 500 x 290 mm

MAINS POWER

Voltage : 120/220VAC
Frequency : 50/60Hz
Current Draw : 4A max

CONTROLLER OUTPUT

Resistance : 10Ohms Min
Power : 300W Max
Voltage : 100V Nominal
Current : 3A Max

DYNAMOMETER POWER

Mechanical Power: 10,000W Max
Voltage Output : 300V Max
Current : 20A Max

INPUTS

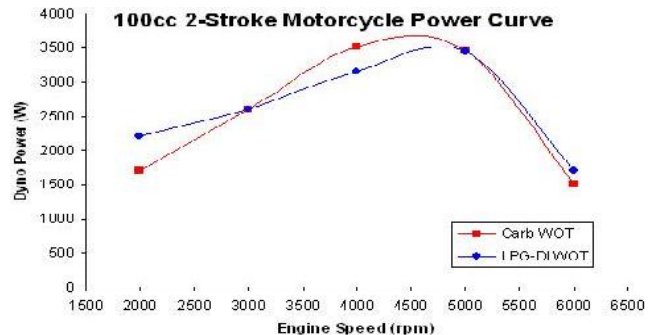
Speed: 1 to 60 pulse per revolution
10V pk-pk maximum
2500 rpm maximum at main roller
16.8 cm Roller Diameter
78kph (50mph) maximum linear speed

Load Cell: 40Nm maximum Loading
200 to 500 ohm
4-wire Wheatstone bridge
5 or 10V excitation

ENVIRONMENTAL

Temp: 10 to 40° C Operational
0 to 50° C Non-Operational
Humidity: 5 to 90% Non-condensing
Shock/Vibe: <10g

This small, robust dynamometer is an excellent match for 50 to 200cc motorcycles. It measures both Torque and Speed, and calculates Power. It can be used for graphing the torque or power curve of the vehicle, as well as tuning and research and development. The sophisticated dynamometer controller can hold the vehicle to a given speed, torque, operated to simulate road load, and run manually from the front panel or automatically from a computer. The controller can accept additional analog input channels for display and logging, and has an integrated Throttle Control for automated testing. Throttle actuator is sold separately



OPTIONS

- High-volume, low noise blower and stand
- Wide Band O2 (AFR) sensor
- Digital Fuel Scale
- 5-Gas Analyzer
- Current/Voltage Clamp Meter
- Combustion Analysis